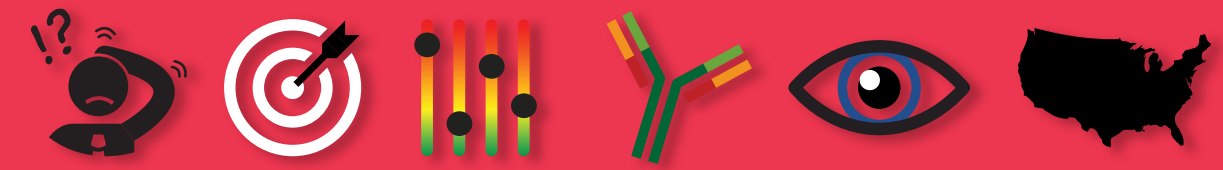


IBD Clinical Decision Support Tool



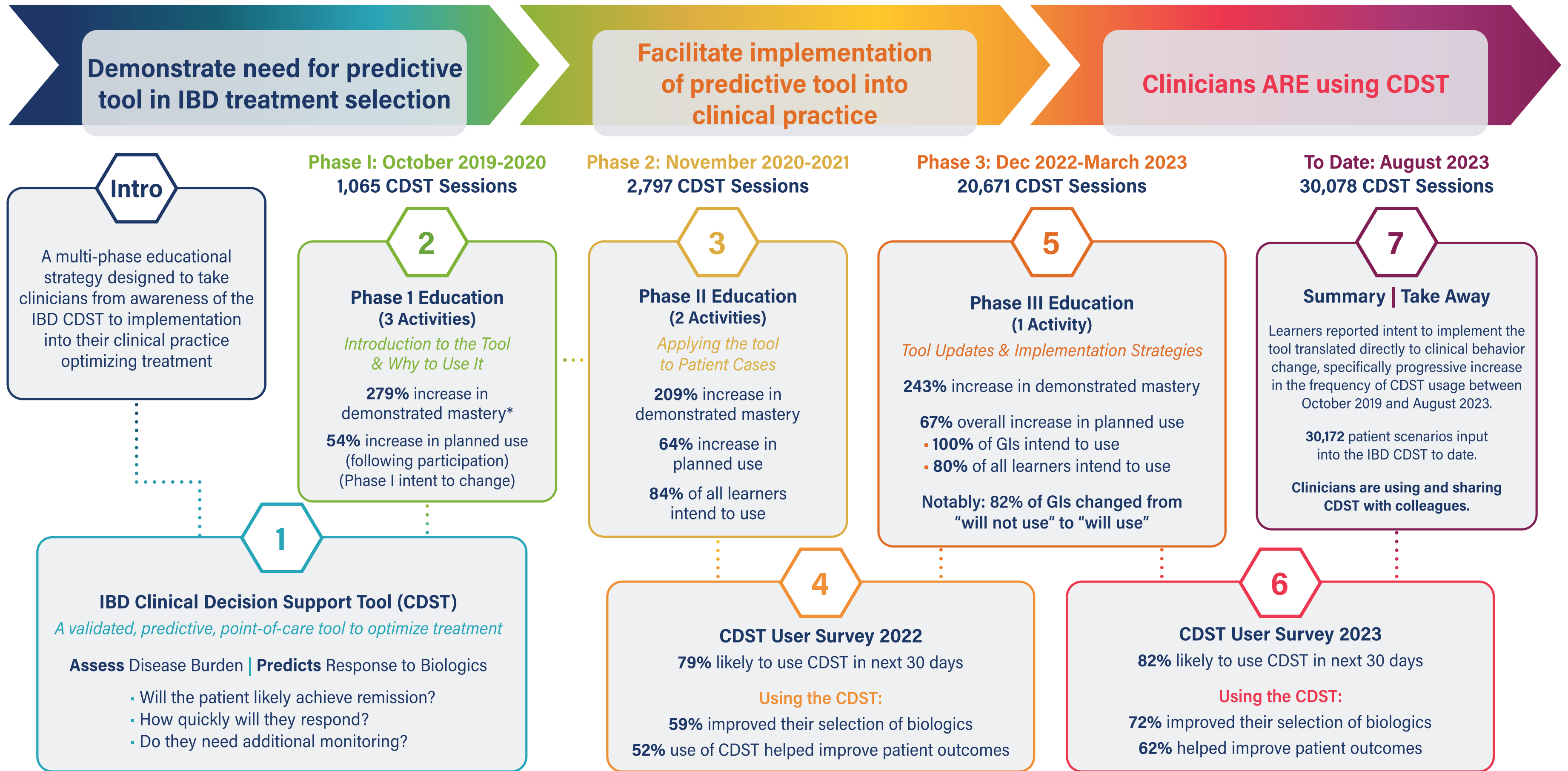
Multi-Year Education Facilitated the Clinical Implementation of a Novel Point-of-Care Tool



P. DULAI^{1,3}, E. JOHNSON², L. ELDASHER², and N. THERIAULT²

1. Feinberg School of Medicine Northwestern University, Chicago, IL, USA 2. RMEI Medical Education, LLC, Voorhees, NJ, USA
3. Disclosures: P.D. has received research support and consulting for Takeda, AbbVie, Janssen, and Pfizer; EJ, LE, NT, no disclosures.

ABMS 2023 Poster 022



Demonstrated mastery: answering a question correctly and reporting a high degree of confidence in their response

The IBD Clinical Decision Support Tool was developed by Parambir Dulai, MD in conjunction with RMEI and the US Health Outcomes Consortium, a collaboration of leading IBD centers across the United States.



EXPERIENCE THE CDST



AUDIO WALK THROUGH

Provided by RMEI Medical Education, LLC  MEDICAL EDUCATION FOR BETTER OUTCOMES

The IBD CDST and activities are supported by an educational grant from Takeda Pharmaceuticals U.S.A., Inc.