

FACULTY BIOGRAPHY



Allison C. Rosenthal, DO

Assistant Professor, Medicine

Medical Director, Adolescent and Young Adult Cancer Program

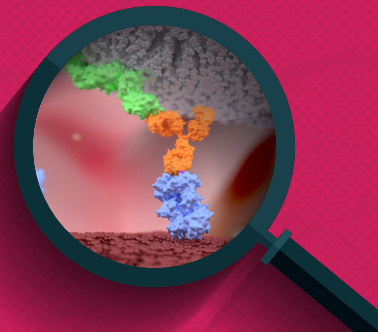
Mayo Clinic

Phoenix, AZ

Allison C. Rosenthal, DO, is an assistant professor of medicine at the Mayo Clinic in Phoenix, AZ. She is also the medical director of the Mayo Clinic's Adolescent and Young Adult Cancer Program and co-directs the CAR-T program. Dr Rosenthal received her medical degree from Arizona College of Osteopathic Medicine of Midwestern University in Glendale, AZ. She then completed her residency in internal medicine at the Creighton University School of Medicine and her fellowship in hematology and medical oncology at the Mayo Clinic College of Medicine and Science, both in Phoenix, AZ. Dr Rosenthal is board certified in internal medicine, hematology, and medical oncology.

Dr Rosenthal treats patients with Hodgkin lymphoma (HL) and non-Hodgkin lymphoma (NHL). Her clinical interests include the management and incorporation of novel treatment strategies for lymphomas, as well as the clinical care of the adolescent and young adult (AYA) population and their unique survivorship issues. Dr Rosenthal's research interests include translational research (such as, bringing novel biomarkers into the clinic), participation in clinical trials looking at new drugs or combinations for patients with HL and NHL, and outcomes research (with a focus in the AYA population).

FACULTY BIOGRAPHY



Yasmin H. Karimi, MD

Assistant Professor, Medicine
University of Michigan
Ann Arbor, MI

Yasmin H. Karimi, MD, is currently a clinical assistant professor of medicine in the Division of Hematology/Oncology and an early career clinical investigator with a specific focus on hematologic malignancies and aggressive B cell lymphomas. Dr Karimi received her medical degree from the University of Pennsylvania School of Medicine in Philadelphia, PA. She went on to complete her residency in internal medicine and her chief residency at the University of Chicago in Chicago, IL. She then completed her fellowship in hematology and oncology at Stanford University in Palo Alto, CA before joining the lymphoma group at the University of Michigan Rogel Cancer Center. Dr Karimi is board certified in internal medicine, hematology, and medical oncology.

Dr Karimi's clinical and research interest focuses on the design, implementation, and analysis of clinical trials in aggressive B cell malignancies. She has published over 20 peer-reviewed journal articles, book chapters, and abstracts and is currently a principal investigator on over 15 clinical trials at the University of Michigan. Dr Karimi was the recipient of the 2015 ASH Merit Award and the 2020 ASCO Merit Award for her research efforts.

**Exploring the Role of Novel Bispecific Antibodies in Relapsed/Refractory Diffuse Large B-Cell Lymphoma
A Clinical Transfers Activity**