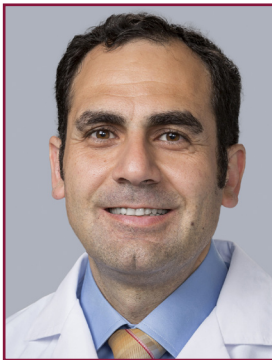


# FACULTY BIOGRAPHY



## **Amer Zeidan, MBBS, MHS**

*Associate Professor, Medicine (Hematology)*

Yale Cancer Center

Yale University

New Haven, CT

**Amer Zeidan, MBBS, MHS**, is an associate professor of medicine (Hematology) at Yale University in New Haven, CT. He is also the medical director of Hematology Early Therapeutics Research, the leader of myeloid malignancies DART (Disease Aligned Research Team), and the director of CME at the Hematology Division of the Yale Cancer Center. Dr Zeidan received his medical degree at the University of Jordan in Amman, Jordan and completed his residency in internal medicine at Rochester General Hospital in Rochester, NY. He then completed fellowships in hematology/oncology and clinical research in myelodysplastic syndromes (MDS) at Johns Hopkins University in Baltimore, MD, where he also earned a Master of Health Science (MHS) degree in Clinical Investigation. Dr Zeidan is board certified in hematology and medical oncology.

Dr Zeidan specializes in the management of myeloid malignancies, especially MDS and acute myeloid leukemia (AML). The focus of Dr Zeidan's clinical/translational research is the development of novel therapies for myeloid malignancies, with a special focus on targeted therapies and immunotherapy-based approaches. Dr Zeidan is also active in health outcomes and comparative effectiveness research for blood cancers diseases and their therapies.

---

**Identifying a Clear Path Through the Changing Maze of AML Management**

# FACULTY BIOGRAPHY



## **Kendra Sweet, MD, MS**

*Associate Member, Malignant Hematology Faculty  
Medical Director, Clinical Research  
Department of Malignant Hematology  
H. Lee Moffitt Cancer Center  
Tampa, FL*

**Kendra Sweet, MD, MS**, is currently an associate member of the Malignant Hematology Faculty at Moffitt Cancer Center in Tampa, FL. Dr Sweet also serves as the Medical Director of Clinical Research for the Department of Malignant Hematology. She completed her medical education at the Medical College of Virginia – Virginia Commonwealth University in Richmond, VA. Her internal medicine residency was completed at the University of Arizona in Tucson, AZ, and her hematology and medical oncology fellowship training at Moffitt Cancer Center/University of South Florida. She was awarded a 3-year career development award from the Leukemia and Lymphoma Society in order to support her research efforts for her first 3 years on faculty. She is board certified in medical oncology, hematology, and internal medicine.

Dr Sweet is a clinical investigator with a focus on acute myeloid leukemia (AML) and chronic myeloid leukemia (CML). She has opened 2 multi-center Phase II clinical trials for which she is the national PI. These 2 trials build on her previous work with ruxolitinib in combination with tyrosine kinase inhibitors (TKIs) for treatment of chronic phase CML. One trial is being run through the Southwest Oncology Group Leukemia Committee and the second is run through the J Khoury Cure CML Consortium. Dr Sweet has also opened a Phase I investigator-initiated clinical trial for AML, combining CPX-351 plus the FLT3-inhibitor gilteritinib. In addition to this, she has been the PI in a number of sponsored clinical trials in AML and BPDCN, and much of her work has led to abstract submissions and presentations at ASH, ASCO, and the European School of Hematology Annual Meetings.

---

**Identifying a Clear Path Through the Changing Maze of AML Management**