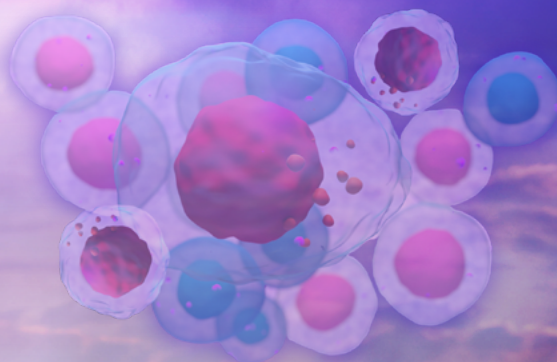


FACULTY BIOGRAPHY



Sundar Jagannath, MD, FASCO

Chair, Multiple Myeloma

Professor, Medicine

Icahn School of Medicine at Mount Sinai

Director, Multiple Myeloma Center of Excellence

Tisch Cancer Center Institute

Editor-in-Chief, Clinical Lymphoma, Myeloma & Leukemia

Mount Sinai Hospital

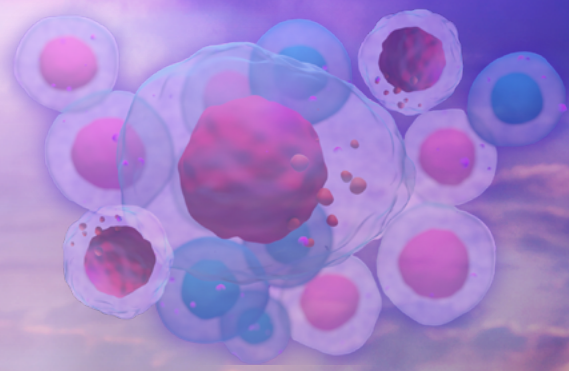
New York, NY

Sundar Jagannath, MD, FASCO, is the director of the Multiple Myeloma Center of Excellence at Tisch Cancer Institute, Mount Sinai Hospital in New York, NY. He is also the professor of medicine and the Mount Sinai Endowed Chair for Multiple Myeloma at Mount Sinai School of Medicine. Dr Jagannath received his medical degree from Baroda Medical College in Vadodara, India. He then completed his residency in internal medicine at BronxCare Health System in New York, Wayne State University School of Medicine in Michigan, and the University of Texas Health Science Center at Houston in Texas. Dr Jagannath is board certified in internal medicine and medical oncology.

Dr Jagannath is a renowned expert in multiple myeloma and bone marrow transplantation. He has published extensively on these topics and is often an invited presenter at professional organizations' annual meetings. He is the editor-in-chief of *Clinical Lymphoma, Myeloma & Leukemia* and a peer reviewer for many other journals.

Dr Jagannath is a board member for the Society of Hematologic Oncology and an active member of the American Society of Clinical Oncology and the American Society of Hematology. He has also received many awards, including the Humanitarian Award from the Multiple Myeloma Research Foundation, the Foundation's Laugh for Life Award, the Innovator Award from the Multiple Myeloma Research Consortium (MMRC), and most recently he received the Fellow of the American Society of Clinical Oncology Award (FASCO).

FACULTY BIOGRAPHY



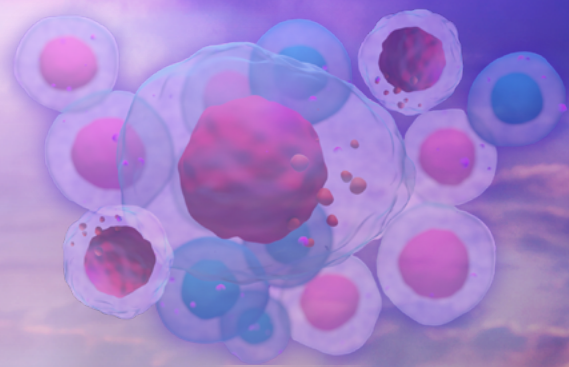
James Hoffman, MD

Associate Professor, Clinical Medicine
Division of Myeloma (Hematology)
Sylvester Comprehensive Cancer Center (SCCC)
University of Miami
Miami, FL

James Hoffman, MD, is an associate professor of clinical medicine in the Division of Myeloma at the Sylvester Comprehensive Cancer Center (SCCC), University of Miami in Miami, FL. Dr Hoffman attended medical school at Albert Einstein College of Medicine in New York, NY. He completed his internship and residency in internal medicine and served as Chief Medical Resident at New York University Medical Center. His fellowship in hematology-oncology was completed at the Memorial Sloan-Kettering Cancer Center, specializing in plasma cell diseases that included multiple myeloma and amyloidosis. Dr Hoffman is board certified in hematology and oncology.

Dr Hoffman, in his current role, has a clinical focus on plasma cell disorders and has conducted dozens of clinical trials for patients with myeloma and amyloidosis. He is a member of the International Myeloma Working Group (IMWG) and the Amyloid Research Consortium (ARC). He is the Associate Director of the Hematology-Oncology Fellowship Program at SCCC and has won several teaching awards.

FACULTY BIOGRAPHY



María-Victoria Mateos, MD, PhD

Associate Professor, Hematology
Director, Myeloma Program
University Hospital of Salamanca
Salamanca, Spain

María-Victoria Mateos, MD, PhD, is the consultant physician in the Hematology Department and an associate professor of medicine at the University of Salamanca in Salamanca, Spain. She is also the director of the Myeloma Program and coordinates the Clinical Trials Unit. Dr Mateos received her medical degree from the University of Valladolid in Spain and completed her residency in hematology at the University Hospital of Salamanca, where she also completed a doctoral degree.

Dr Mateos serves as coordinator of GEM (Spanish Myeloma Group), with direct involvement in the design and development of clinical trials. She has coordinated many clinical trials especially in the smouldering myeloma setting and these trials have profoundly influenced current options for the management of these patient populations.

Dr Mateos has published over 300 original papers in international journals and her articles have received many citations. She is a member of the IMWG (International MM Working Group), IMS (International MM Society), EHA, and ASH. Among her invited presentations, she has contributed to the educational sessions of EHA, ASH, and ASCO several times.

Dr Mateos has served on the ASH Scientific Committee on plasma cell diseases, the EHA's Scientific Program Committee and Advisory Board, has been the Councilor on the EHA Board, a member of the Steering Committee for the Society of Hematologic Oncology (SOHO), a member of the IMS Executive Board, and as a member of the European School of Haematology (ESH) Scientific Committee. Dr Mateos has received the Briand Durie Award for recognizing excellence in myeloma research.